



FOR LEASE | OFFICE

GROUND FLOOR LOBBY ENTRANCE SPACE AVAILABLE

2480 Mission Street, San Francisco, CA 94110



LEASE OVERVIEW

AVAILABLE SF: 2,892 SF

LEASE RATE: \$3.75 SF/Yr (NNN)

LOT SIZE: 12,998 Acres

BUILDING SIZE: 36,969 SF

BUILDING CLASS: B

ZONING: Mission Street NCT

CROSS STREETS: Between 20th And 21st Streets

PROPERTY DESCRIPTION

Ground floor lobby entrance

Excellent visibility from Mission Street

Parking garage in building accessible from San Carlos Avenue

Minutes walk from BART 24th Street Mission Station

Minutes walk from MUNI 21 Street Transit Stop

Abundant medical and dental practitioners nearby

Sutter Health Care and CPMC Medical Center-St. Luke's Campus nearby

Rich in neighborhood amenities - restaurants, retail, banks, etc.



All SVN® Offices Independently Owned & Operated.
The information listed above has been obtained from sources we believe to be reliable, however, we accept no responsibility for its correctness.

DEBORAH QUOK

Managing Director
415.464.6401
djquok@svn.com
BRE #00949690

CATHERINE HOUSE, CCIM, FRICS

Managing Director
415.464.6401
catherineh@svn.com
BRE #01327824



FOR LEASE | OFFICE

GROUND FLOOR LOBBY ENTRANCE SPACE AVAILABLE

2480 Mission Street, San Francisco, CA 94110



DEBORAH QUOK

Managing Director
415.464.6401
djquok@svn.com
BRE #00949690

CATHERINE HOUSE, CCIM, FRICS

Managing Director
415.464.6401
catherineh@svn.com
BRE #01327824

All SVN® Offices Independently Owned & Operated.
The information listed above has been obtained from sources we believe to be reliable, however, we accept no responsibility for its correctness.



FOR LEASE | OFFICE

NEIGHBORHOOD AMENITIES MAP

2480 Mission Street, San Francisco, CA 94110



DEBORAH QUOK

Managing Director
415.464.6401
djquok@svn.com
BRE #00949690

CATHERINE HOUSE, CCIM, FRICS

Managing Director
415.464.6401
catherineh@svn.com
BRE #01327824

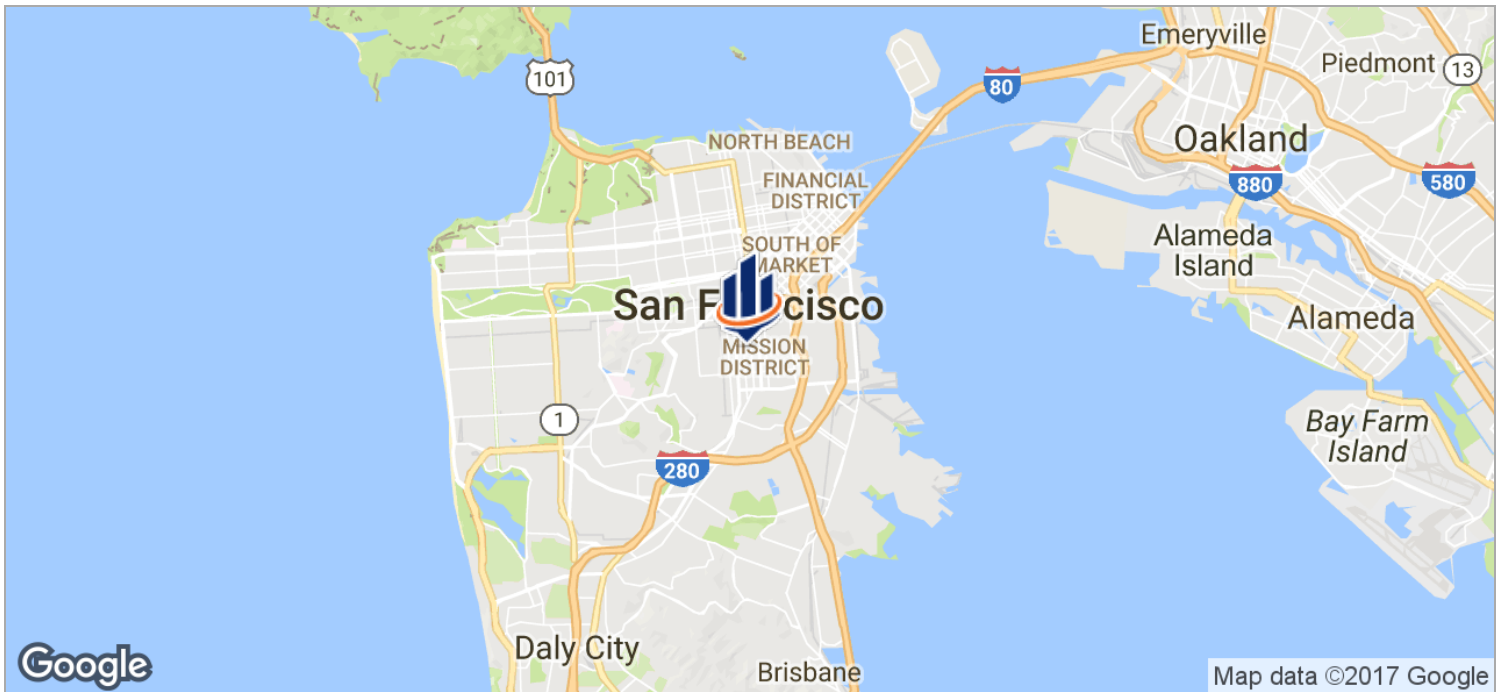
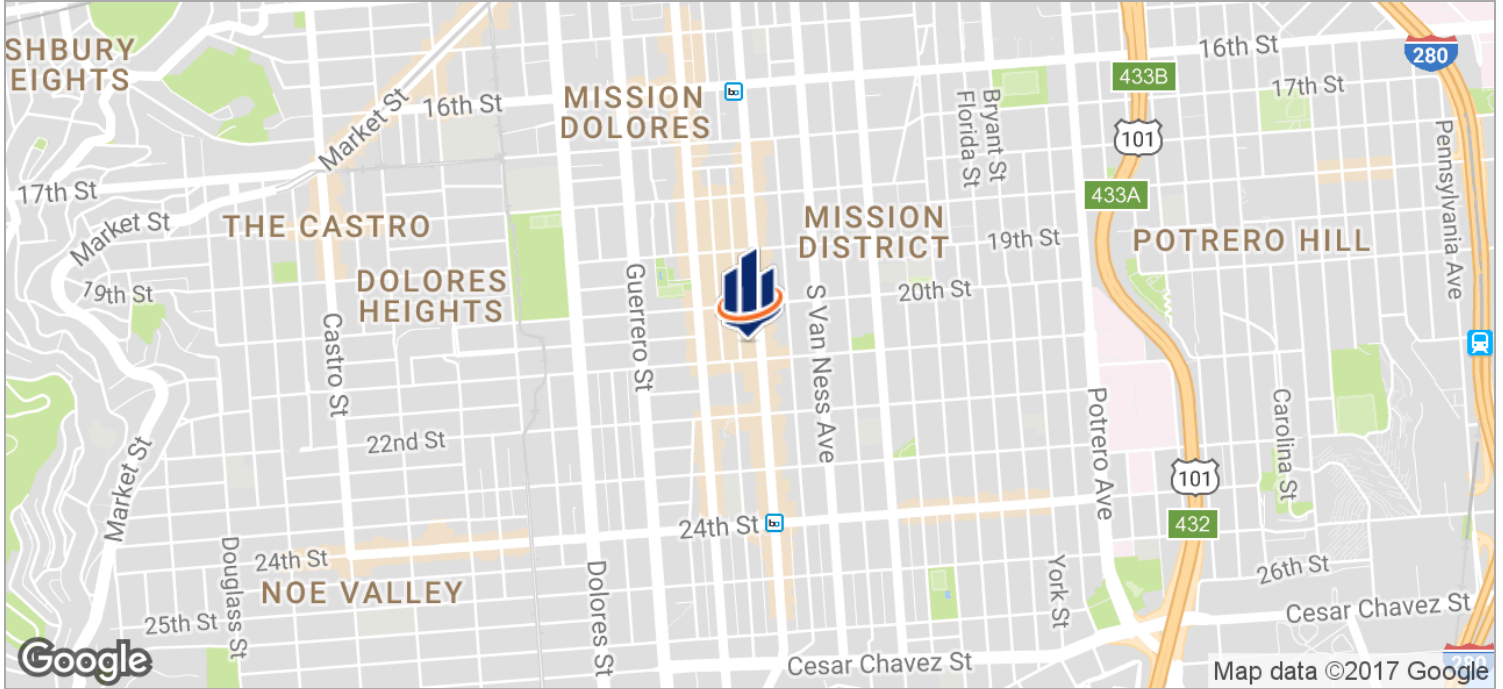
All SVN® Offices Independently Owned & Operated.
The information listed above has been obtained from sources we believe to be reliable, however, we accept no responsibility for its correctness.



FOR LEASE | OFFICE

GROUND FLOOR LOBBY ENTRANCE SPACE AVAILABLE

2480 Mission Street, San Francisco, CA 94110



DEBORAH QUOK

Managing Director
415.464.6401
djquok@svn.com
BRE #00949690

CATHERINE HOUSE, CCIM, FRICS

Managing Director
415.464.6401
catherineh@svn.com
BRE #01327824

All SVN® Offices Independently Owned & Operated.
The information listed above has been obtained from sources we believe to be reliable, however, we accept no responsibility for its correctness.



FOR LEASE | OFFICE

GROUND FLOOR

2480 Mission Street, San Francisco, CA 94110



DEBORAH QUOK

Managing Director
415.464.6401
djquok@svn.com
BRE #00949690

CATHERINE HOUSE, CCIM, FRICS

Managing Director
415.464.6401
catherineh@svn.com
BRE #01327824

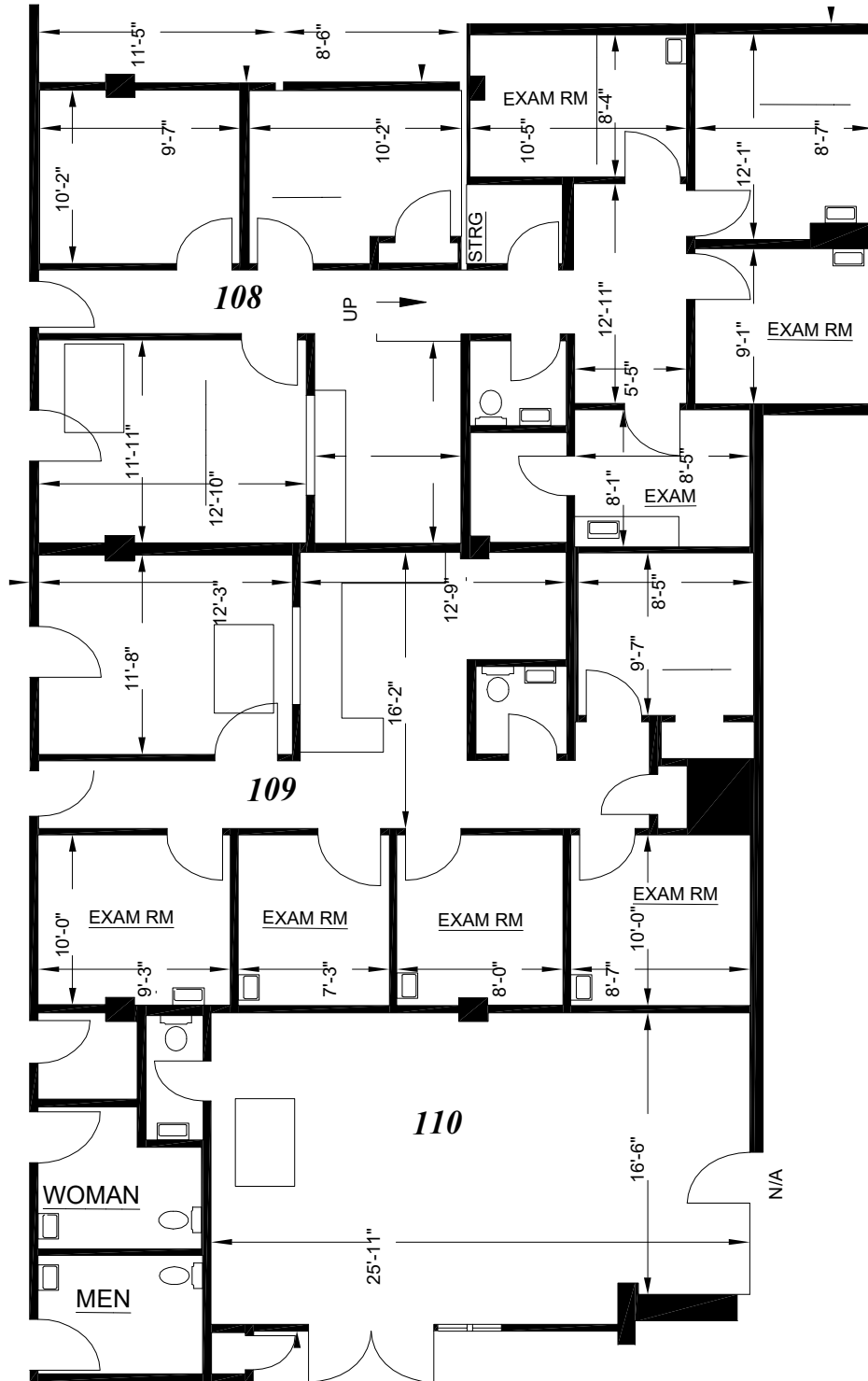
All SVN® Offices Independently Owned & Operated.
The information listed above has been obtained from sources we believe to be reliable, however, we accept no responsibility for its correctness.



FOR LEASE | OFFICE

SPACE AVAILABLE

2480 Mission Street, Suite 108-110 San Francisco, CA 94110



DEBORAH QUOK

Managing Director
415.464.6401
djquok@svn.com
BRE #00949690

CATHERINE HOUSE, CCIM, FRICS

Managing Director
415.464.6401
catherineh@svn.com
BRE #01327824

All SVN® Offices Independently Owned & Operated.
The information listed above has been obtained from sources we believe to be reliable, however, we accept no responsibility for its correctness.