

27,312 RSF Class A Office Space Available

SUBLEASE

FLOORS:	Full 13th Floor and Partial 12 th Floor
AREA:	Suite 1300 - 17,141 RSF Suite 1200 - 10,171 RSF Total Area = 27,312 RSF*
RENTAL RATE:	Mid \$50's FSG
POSSESSION:	Immediate
TERM:	Sublease through 3/15/2021

FEATURES

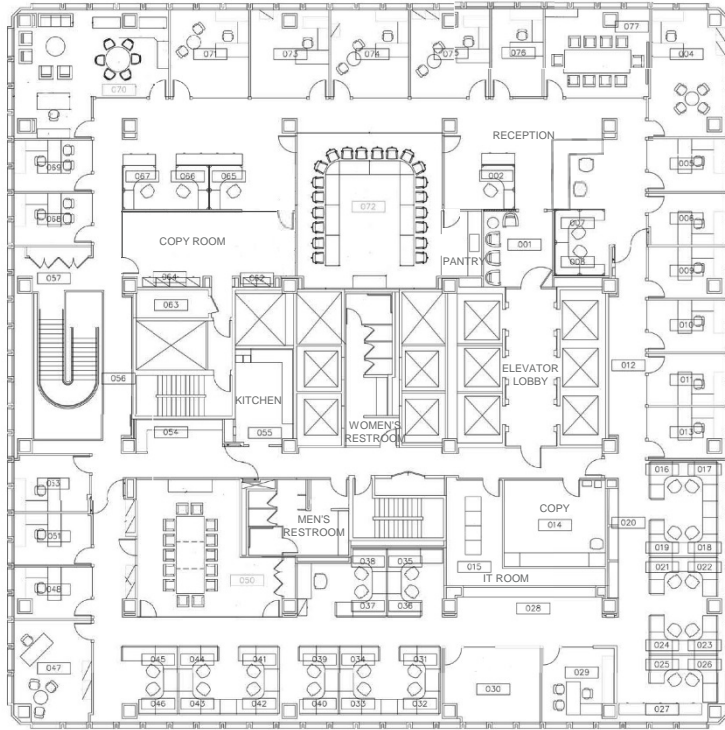
- * May be combined with the remaining portion of the 12th Floor (7,670 RSF) for two floors totalling 34,982 RSF
- 28 Private Offices, including 3 Large Corner Offices, 1 Large Boardroom, 4 Conference Rooms, 2 Kitchens, Large Break Area/Lounge, ± 62 Work Stations, 2 Copy Rooms, and 1 Large Server Room.
- Plug & Play Furniture Available. Fully Wired.
- Parking: Eight (8) spaces available.
- Grand Staircase connecting the two floors.



Greg Hylton
CA Lic. #01189288
greg.hylton@cushwake.com
415-352-2402

Margaret R. Duskin
CA Lic. #00471868, LEED GA
mduskin@cushwake.com
415-773-3538

Cushman & Wakefield of California, Inc.
Lic. #00616335
425 Market Street, Suite 2300
San Francisco, CA 94105
www.cushmanwakefield.com



Suite 1300: 17,141 RSF

- Good North Views
- 20 Private Offices (3 Large Corner Offices and 17 Standard Size)
- 1 Large Boardroom
- 2 Conference Rooms (1 Large)
- Kitchen and Boardroom Pantry
- 2 Copy Rooms
- Large Server Room
- ± 36 Work Stations



Boardroom

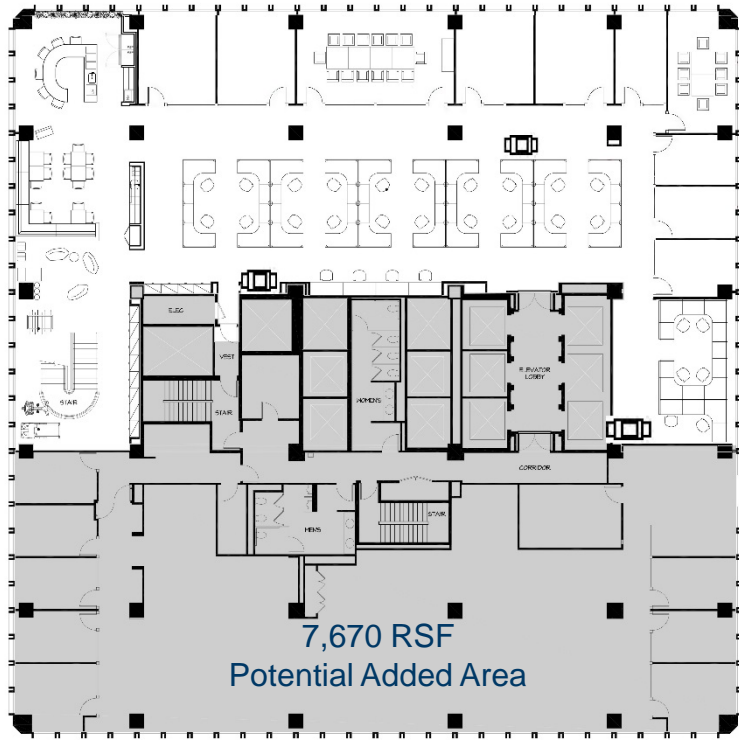


Corner Office

Greg Hylton
CA Lic. #01189288
greg.hylton@cushwake.com
415-352-2402

Margaret R. Duskin
CA Lic. #00471868, LEED GA
mduskin@cushwake.com
415-773-3538

Cushman & Wakefield of California, Inc.
Lic. #00616335
425 Market Street, Suite 2300
San Francisco, CA 94105
www.cushmanwakefield.com



Suite 1200: 10,171 RSF

- Kitchen and Large Break Area/Lounge
- 8 Private Offices
- Two Conference Rooms
- ± 26 Work Stations
- Good North Views



Break Area/Lounge



Major Kitchen

Greg Hylton
CA Lic. #01189288
greg.hylton@cushwake.com
415-352-2402

Margaret R. Duskin
CA Lic. #00471868, LEED GA
mduskin@cushwake.com
415-773-3538

Cushman & Wakefield of California, Inc.
Lic. #00616335
425 Market Street, Suite 2300
San Francisco, CA 94105
www.cushmanwakefield.com