

The Fruitvale Gateway Building

2648 International Boulevard, Oakland, CA

OFFICE SPACE AVAILABLE

Prominent eight story highrise building with Bay Views. Located on the corner of International Boulevard and 27th Avenue in the business hub of the Fruitvale District.



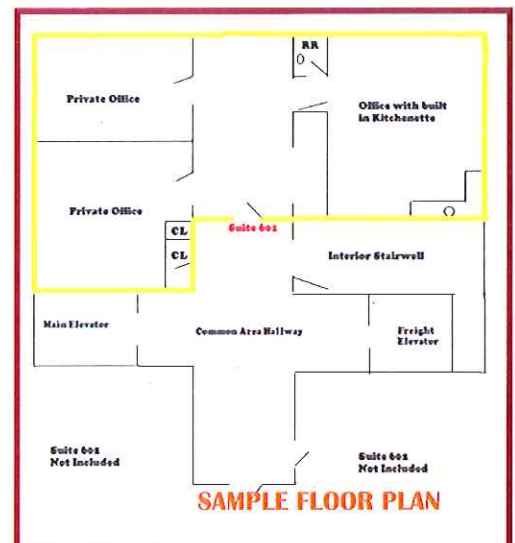
Property Highlights

- ◆ Ample, Well Lit, Free Parking
- ◆ Professionally Managed (Onsite)
- ◆ Close to Major Freeways I-580/I-880 and Fruitvale BART Station



Amenities

- ◆ Efficient sizes ~787+/- sq ft to full floor users.
- ◆ Distinguished Property at an affordable rate
- ◆ Bay Views from many windows-Downtown Skyline
- ◆ Landlord pays water, garbage and heat
- ◆ Building wired for Comcast High Speed Internet AT&T U-verse Fiber Technology (*coming soon*)
- ◆ Diverse occupancy including medical, dental, legal and other professional services
- ◆ Build to Suit ◆ Sprinklered
- ◆ Onsite Storage Availability ◆ Lobby Intercom
- ◆ Perfect for a growing business
- ◆ Full floor users have privacy features



****Outside Broker's Welcome****

Call for availability & rates

For more information or to schedule a viewing, please contact:

Bay Counties Real Estate, Inc. DRE #1273207

◆ (510) 533-1539~Office ◆ (510) 533-6954~Fax

◆ info@baycountiesre.com

**Floor Plan is for reference purposes only and may not accurately depict exact wall locations. Plan is not to scale. Information and availability is subject to change without notice.

Updated 6/29/15

FOR LEASE