

San Francisco's First Creative High-Rise

350 BUSH STREET

Presented by:



Lincoln Property Company

CBRE

350 Bush Street

San Francisco's First
Creative High-Rise



© 2017 CBRE, Inc. The information contained in this document has been obtained from sources believed reliable. While CBRE, Inc. does not doubt its accuracy, CBRE, Inc. has not verified it and makes no guarantee, warranty or representation about it. It is your responsibility to independently confirm its accuracy and completeness. Any projections, opinions, assumptions or estimates used are for example only and do not represent the current or future performance of the property. The value of this transaction on tax and other factors which should be evaluated by your tax, financial and legal advisors. You and your advisors should conduct a careful, independent investigation of the property to determine to your satisfaction the suitability of the property for your needs. Photos herein are the property of their respective owners and use of these images without the express written consent of the owner is prohibited. CBRE and the CBRE logo are service marks of CBRE, Inc. and/or its affiliated or related companies in the United States and other countries. All other marks displayed on this document are the property of their respective owners.



350 Bush Street

- 200,000 Sq. Ft.— Floors 10 - 19
- 3 blocks to BART/MUNI. 3.5 to new subway
- Historic lobby and gathering area
- 6 exterior decks
- Side-core, concrete construction
- Avg. floor sizes: 19,800 Sq. Ft.
- Parking and comprehensive bike program

Now Under Construction

Occupancy Late-2017

Historic Lobby - Reinvented



350 Bush | San Francisco's First Creative High-Rise

Presented by:
 **LPC CBRE**



**Historic Mining Exchange
Authentic Part of San Francisco History**



350 Bush | San Francisco's First Creative High-Rise

Presented by:



LPC CBRE

Contemporary Main Lobby



350 Bush | San Francisco's First Creative High-Rise

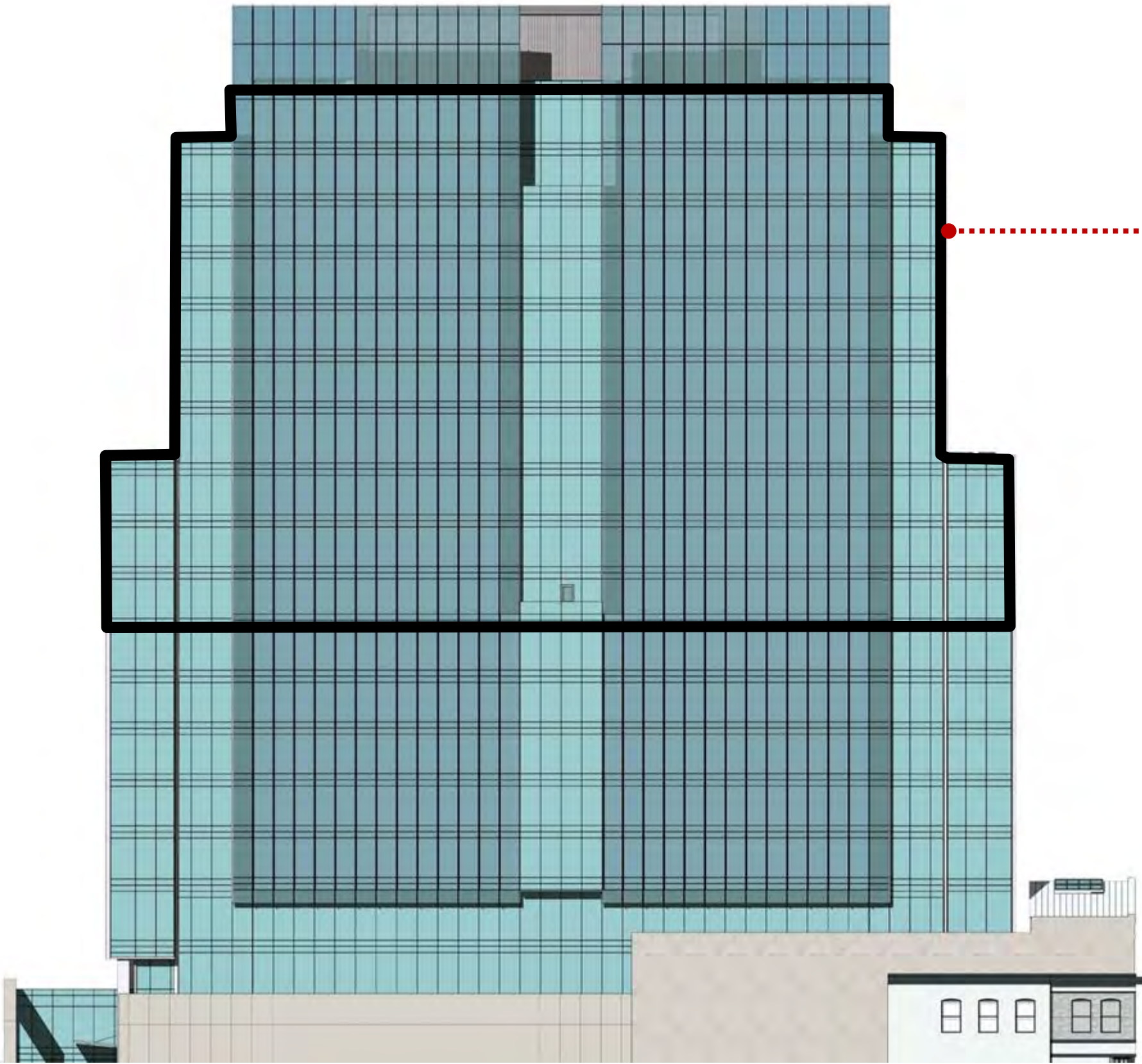
Presented by:



LPC CBRE

zū

1,500 – 2,000 Employees at 350 Bush



Floor	RSF	Headcount	
		100 SF / Person	130 SF / Person
19	14,484	145	111
18	19,061	191	147
17	19,334	193	149
16	19,375	194	149
15	19,334	193	149
14	19,341	193	149
13	18,327	183	141
12	22,804	228	175
11	23,017	230	177
10	23,017	230	177
Totals	198,096	~2,000	~1,500

350 BUSH

10th Floor Plan

Option 2

Program

INDIVIDUAL WORKSTATIONS

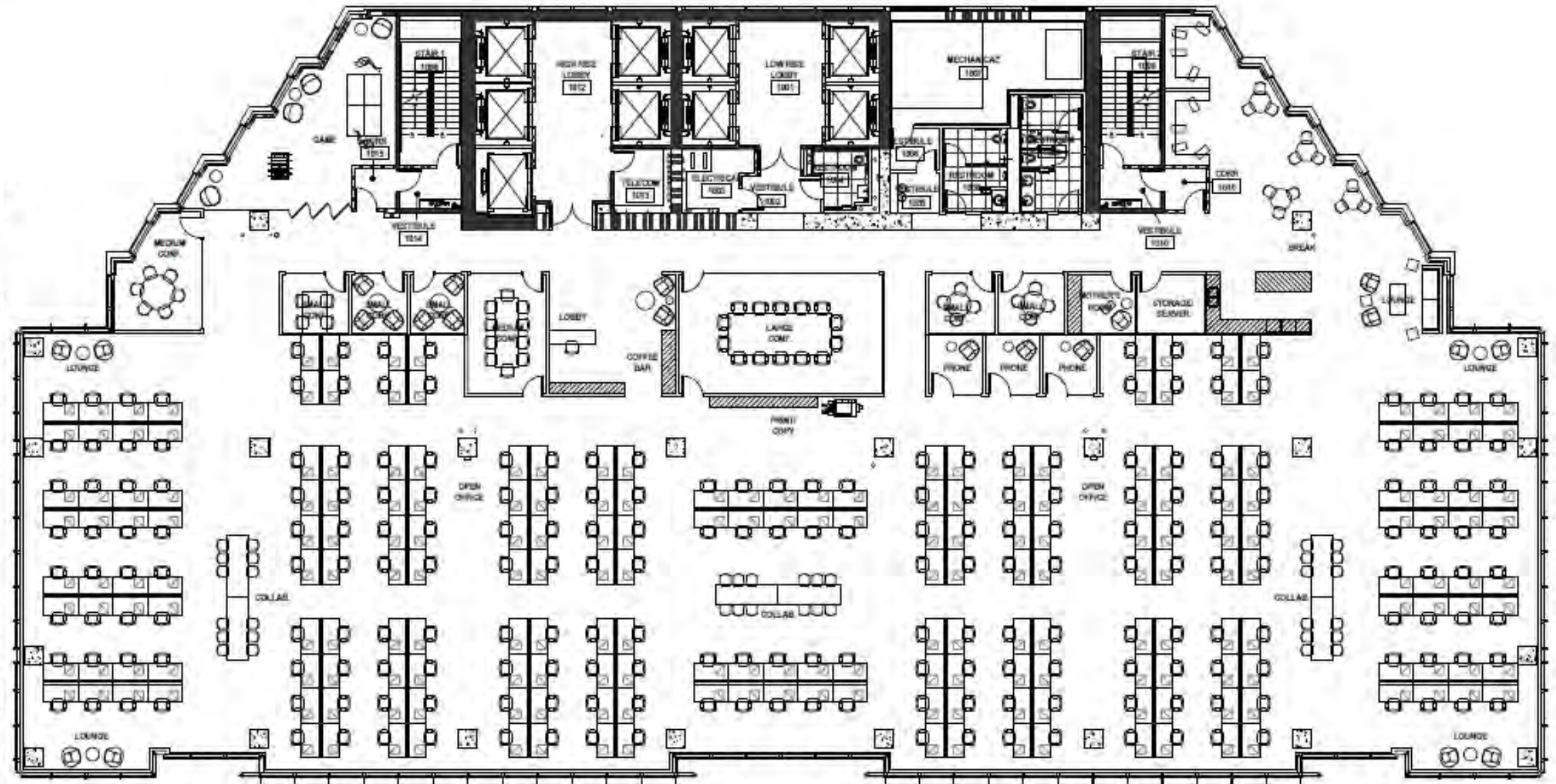
30" x 60" Workstations	228
RSF per person	1:100

MEETING SPACES

Large Conference Rooms	1
Medium Conference Rooms	2
Small Conference / Team Rooms	5
Phone Rooms	3
Collaboration Areas	6
Lounge Areas	6
Break / Game Rooms	2
Total Meeting Spaces	25
Meeting to Headcount Ratio	1:9

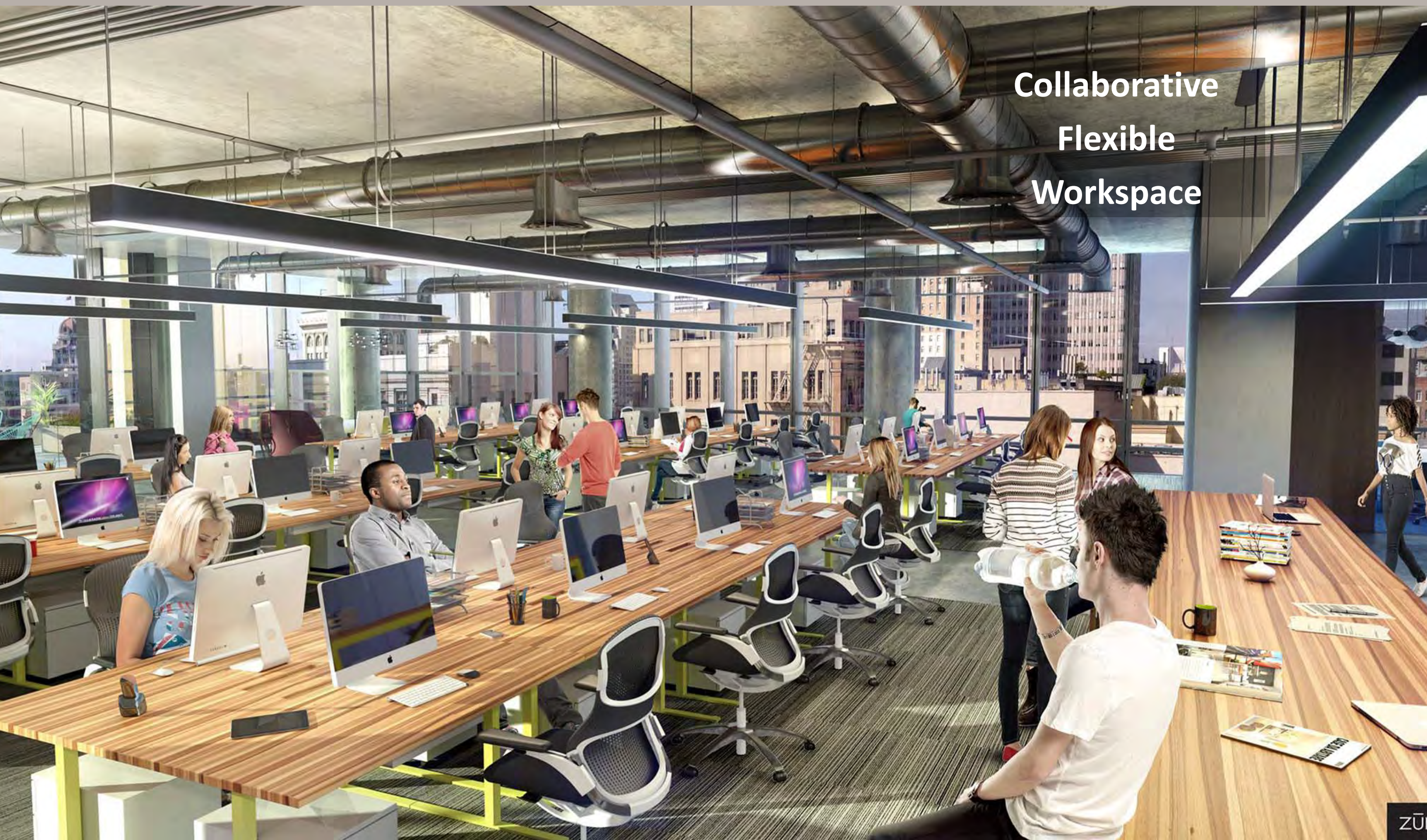
STORAGE + SUPPORT

Storage Rooms	1
Mother's Room	1
Print / Copy Station	1
Server Room	1



10th Floor – 23,017 Sq. Ft.

Collaborative
Flexible
Workspace



350 Bush | San Francisco's First Creative High-Rise

Presented by:



LPC CBRE

ZU

Curate a Creative Culture



350 Bush | San Francisco's First Creative High-Rise

Presented by:



LPC CBRE



Open Ceilings and Vertical Connectivity

350 Bush | San Francisco's First Creative High-Rise

Presented by:



LPC CBRE



Strong Visual Connections

350 Bush | San Francisco's First Creative High-Rise

Presented by:



LPC CBRE

350 BUSH

13th Floor Plan

Option 3

Program

INDIVIDUAL WORKSTATIONS

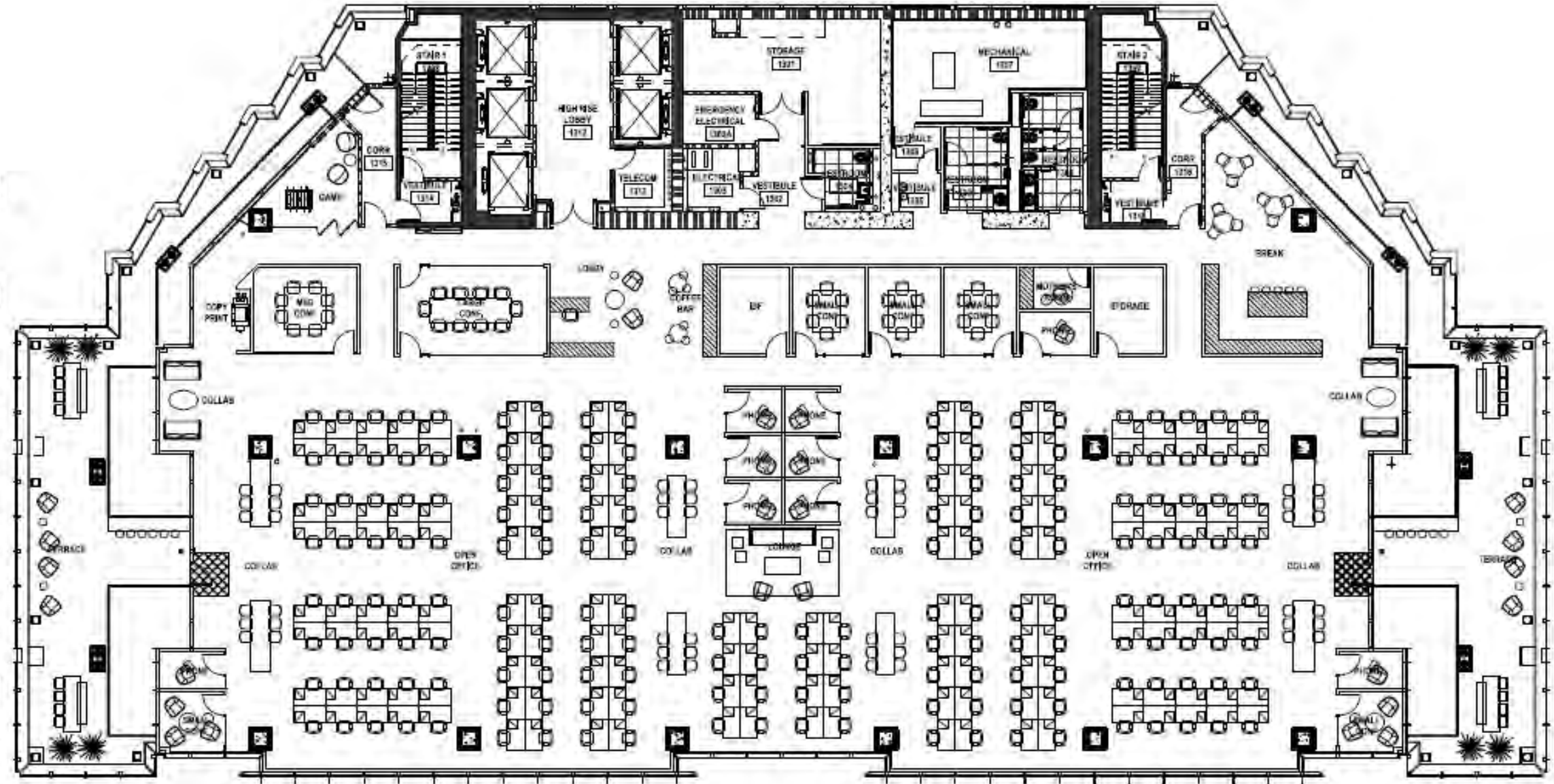
30" x 54" Workstations	176
RSF per person	1:104

MEETING SPACES

Large Conference Rooms	1
Medium Conference Rooms	1
Small Conference / Team Rooms	5
Phone Rooms	9
Collaboration Areas	11
Lounge Areas	2
Break / Game Rooms	1
Total Enclosed Spaces	30
Enclosed to Headcount Ratio	1.6

STORAGE + SUPPORT

Storage Rooms	1
Mother's Room	1
Print / Copy Station	1
Server Room	1



13th Floor – 18,327 Sq. Ft. | ± 15 Feet

Indoor / Outdoor Work Experience



350 Bush | San Francisco's First Creative High-Rise

Presented by:



LPC CBRE

Spectacular Roof-Deck



350 Bush | San Francisco's First Creative High-Rise

Presented by:



LPC CBRE

ZU

Landscaped and Furnished with Views



350 Bush | San Francisco's First Creative High-Rise

Presented by:



LPC CBRE

European-Style Neighborhood



French Quarter



Belden Alley



Kearny Street Corridor



St. Mary's Square Park

350 Bush | San Francisco's First Creative High-Rise

Presented by:



40 Restaurants Within One Block

RESTAURANTS

- 1 Aquitaine Wine Bar & Bistro
- 2 Ayola
- 3 B44
- 4 Baladie Café
- 5 Banana House
- 6 Bangkok Best Thai Cuisine
- 7 Belden Taverna
- 8 Bistro Burger
- 9 Boxed Foods Company
- 10 Brindisi Cucina Di Mare
- 11 Café Bastille
- 12 Café Claude
- 13 Café Tiramisu
- 14 California Golden Cookies
- 15 China Fun Express
- 16 Claudine
- 17 Escape From New York Pizza
- 18 Foundation Café
- 19 Harrow
- 20 L & L Hawaiian Barbecue
- 21 La Fusion
- 22 Le Central Bistro
- 23 Miyabi Sushi Togo
- 24 Muracci's Japanese Curry & Grill
- 25 Murphy's Pub
- 26 Onigilly
- 27 Pachino Trattoria & Pizzeria
- 28 Paladar Café Cubano
- 29 Pasilla Mexican Grill
- 30 Per Diem
- 31 Plouf
- 32 Pomodoro Pizza
- 33 Ramen Underground
- 34 Sam's Grill & Seafood
- 35 Sauce: Belden Place
- 36 Shorty Goldsteins
- 37 Sushi Tosuki
- 38 Sushirito
- 39 The Golden West
- 40 What's Up Dog
- 41 Working Girl Café

FITNESS

- 1 Bay Club
- 2 Equinox
- 3 24 Hour Fitness

BARS

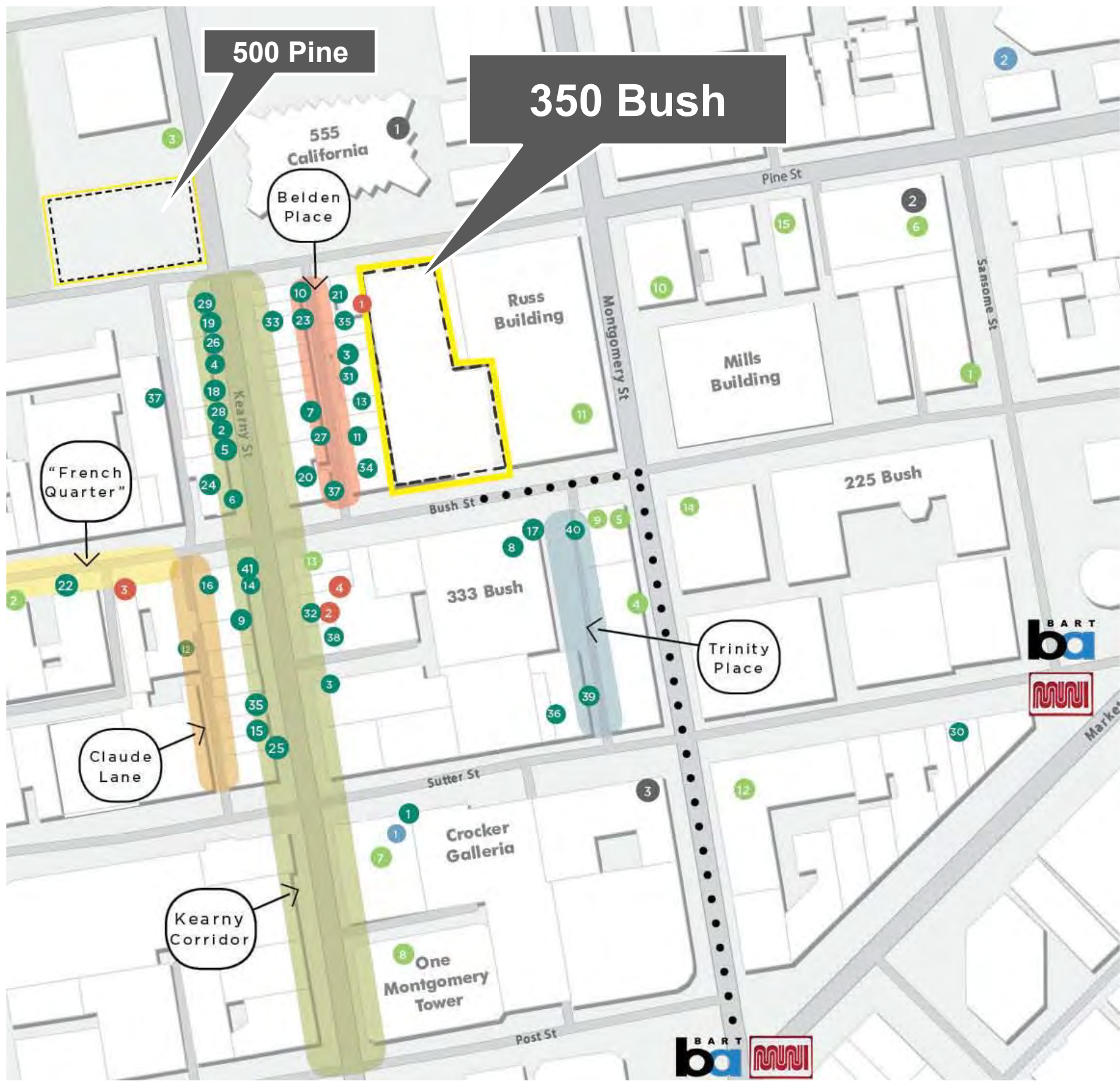
- 1 Occidental Cigar Bar
- 2 Rickhouse
- 3 The Irish Bank
- 4 Topsy's Fun House

HOTELS

- 1 Galleria Park Hotel
- 2 Mandarin Oriental

COFFEE / JUICE / CAFÉ

- 1 Blue Bottle Coffee
- 2 Café De La Presse
- 3 Coffee Bar Kearny
- 4 Coffee Bar Montgomery
- 5 Coffee Bean & Tea Leaf
- 6 Fuel Café
- 7 Jamba Juice
- 8 Project Juice
- 9 Living Greens
- 10 Native Juice Co
- 11 StaPeet's Coffee & Tea
- 12 Starbucks
- 13 Starbucks
- 14 Workshop Café
- 15 Juice Shop



For Leasing Information:

Bill Cumbelich

Lic. 00533546

(415) 291-8882

bill.cumbelich@cbre.com

Patrick Devinger

Lic. 01521442

(415) 901-5181

patrick.devinger@cbre.com