

±43,759 RSF OFFICE BUILDING AVAILABLE FOR SUBLEASE DIVISIBLE TO ±10,801 RSF



±43,759 RSF Office Building Available (divisible to ±10,801 RSF)
Full Building Available for Sublease

Property Highlights

- Part of Wareham's Aquatic Park Center
- Sublease Term Through 5/31/2021
- 88 Free Parking Stalls On Site
- Free West Berkeley Shuttle
- Ideal HQ Office Building
- Furnished and Wired Plug and Play
- Direct Lease Possible
- Divisible to ±10,801 RSF

Nearby Amenities

Restaurants

- 1 Riva Cucina
- 2 Spoon Korean Bistro
- 3 Prizefighter
- 4 Rotten City Pizza

Services and Shopping

- 1 Berkeley Bowl West
- 2 Orchard Supply Hardware
- 3 Looking Glass Photo
- 4 Walgreens

Ryan Hattersley

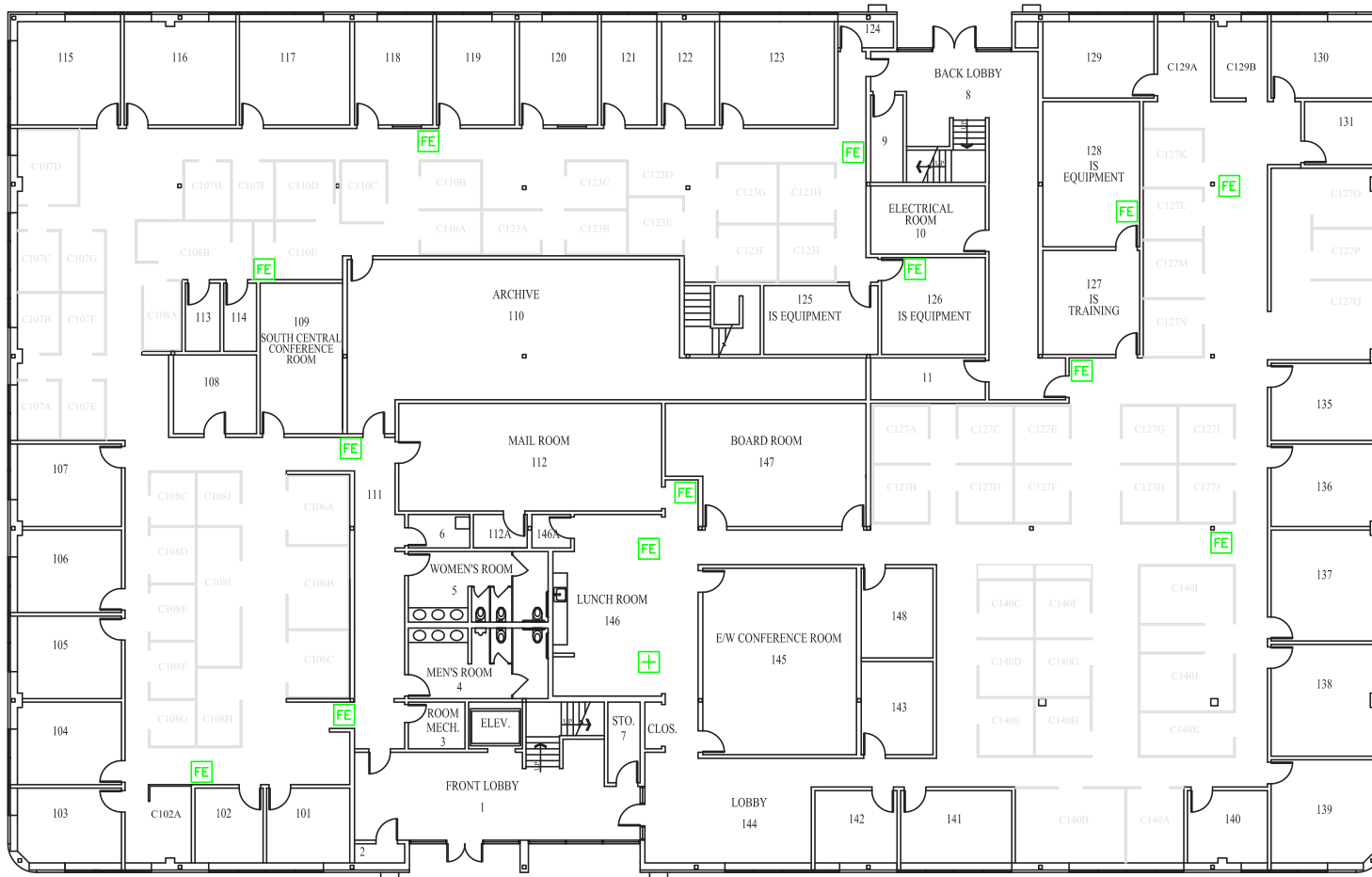
Executive Managing Director
+1 510 891 5802
ryan.hattersley@cushwake.com
LIC #01354553

Mark McGranahan

Vice Chairman
+1 415 773 3540
mark.mcgranahan@cushwake.com
LIC #01176912

555 12th Street, Suite 1400
Oakland, CA 94607
cushmanwakefield.com

First Floor



Ryan Hattersley
Executive Managing Director
+1 510 891 5802
ryan.hattersley@cushwake.com
LIC #01354553

Mark McGranahan
Vice Chairman
+1 415 773 3540
mark.mcgranahan@cushwake.com
LIC #01176912

555 12th Street, Suite 1400
Oakland, CA 94607
cushmanwakefield.com

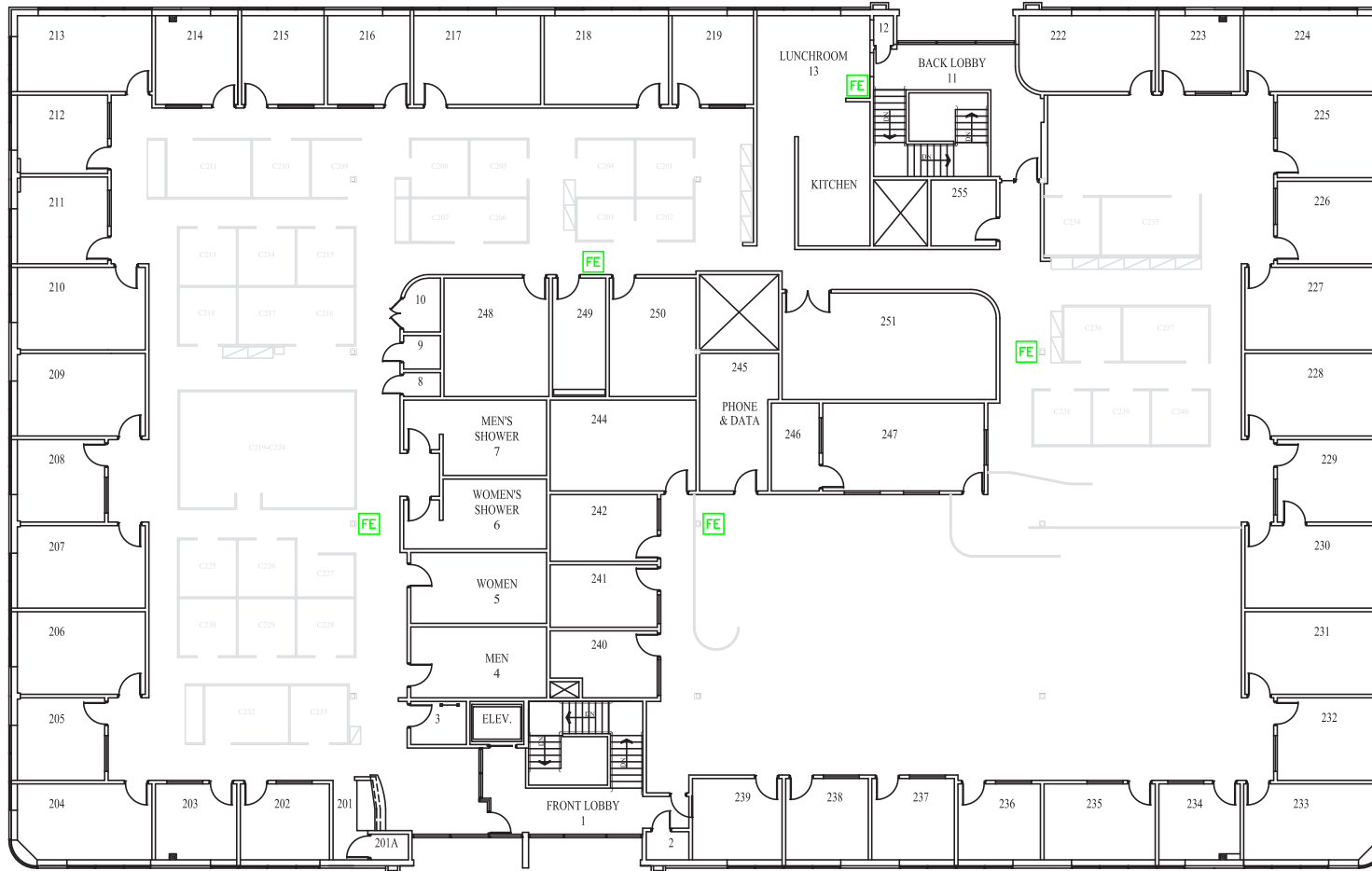
First Floor (Demising Scheme)



Ryan Hattersley
Executive Managing Director
+1 510 891 5802
ryan.hattersley@cushwake.com
LIC #01354553

Mark McGranahan
Vice Chairman
+1 415 773 3540
mark.mcgranahan@cushwake.com
LIC #01176912

555 12th Street, Suite 1400
Oakland, CA 94607
cushmanwakefield.com

Second Floor


Ryan Hattersley
 Executive Managing Director
 +1 510 891 5802
 ryan.hattersley@cushwake.com
 LIC #01354553

Mark McGranahan
 Vice Chairman
 +1 415 773 3540
 mark.mcgranahan@cushwake.com
 LIC #01176912

555 12th Street, Suite 1400
 Oakland, CA 94607
cushmanwakefield.com