

FOR LEASE > OFFICE SPACE

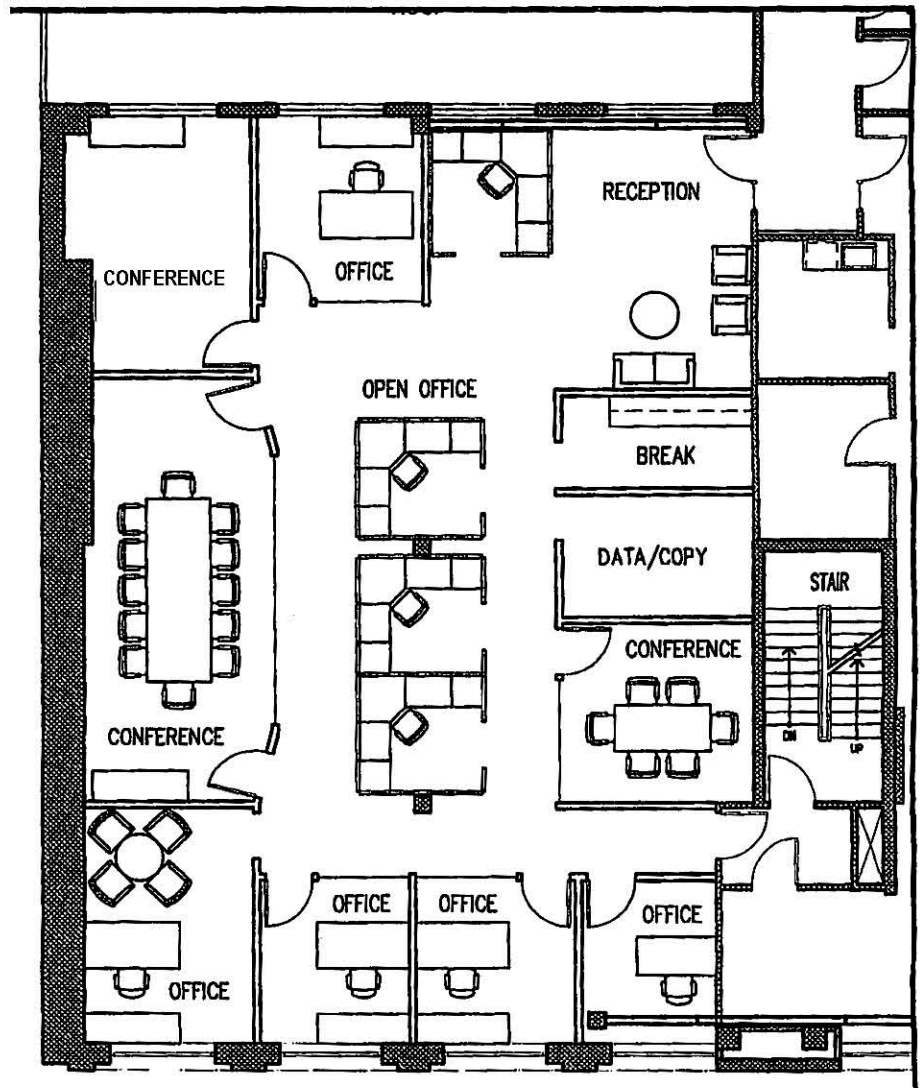
111-125 Maiden Lane

UNION SQUARE | SAN FRANCISCO

Suite 650 - Approximately 2,979 Rentable Square Feet

can be combined with Suite 600 to be approximately 6,108 rentable square feet

- > 3 Conference Rooms
- > 5 Private Offices
- > Kitchen
- > Server room
- > Excellent natural light



This marketing piece has been prepared by Colliers International for general information only. Information contained herein has been obtained from sources deemed reliable and no representation is made as to the accuracy thereof. Colliers International does not guarantee, warrant or represent that the information contained in this document is correct. Any interested party should undertake their own inquiries as to the accuracy of the information. Colliers International excludes equivocally all inferred or implied terms, conditions and warranties arising out of this document and excludes liability for loss and damages arising there from.

Contact

JOHN JENSEN
LIC. 01102014
415 867 1178
john.jensen@colliers.com

COLLIERS INTERNATIONAL
101 Second Street, 11th Floor
San Francisco, CA 94105
www.colliers.com